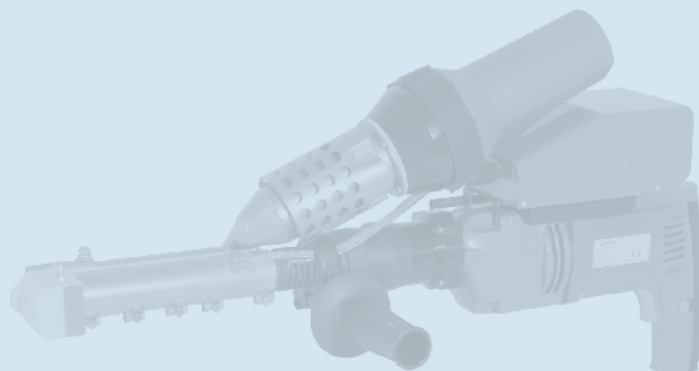
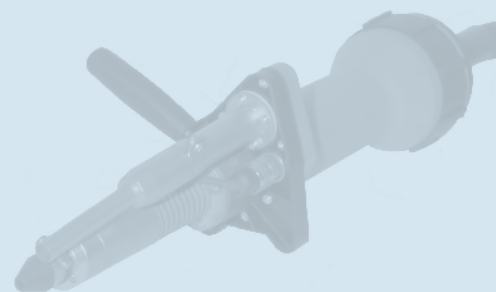
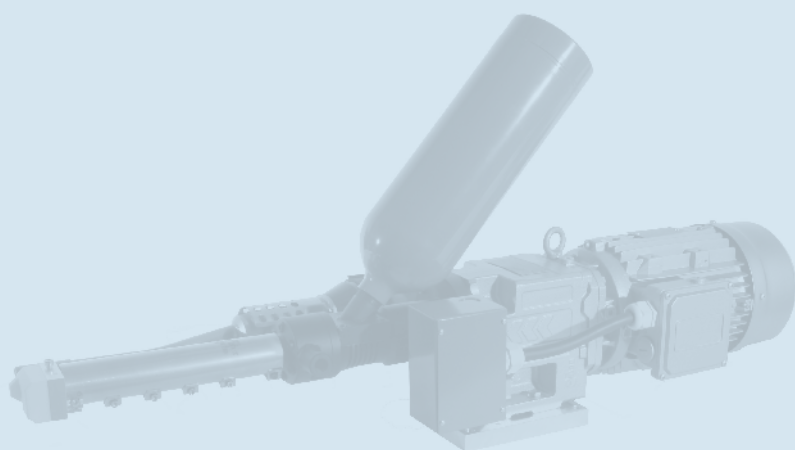


# HEAT ON

## Plastic Welding Extruders



# BAK

[www.bak-ag.com](http://www.bak-ag.com)



BAK Thermoplastic  
Welding Technology AG

Industriestrasse 6  
6064 Kerns / Switzerland

E-Mail [info@bak-ag.com](mailto:info@bak-ag.com)

Telefon +41 (0)41 661 22 50  
Fax +41 (0)41 661 22 51

# HEAT ON

- With brushless pre-heater.
- Patented temperature measurement system by Dohle, Germany. The thermocouple is located inside the mass barrel on the outlet, this guarantees a real temperature control and read out.
- Cold start protection by mass and air temperature.
- All types are available with a revolving head with integrated preheat nozzle to weld in any direction.
- No wear parts on the rod feed system.

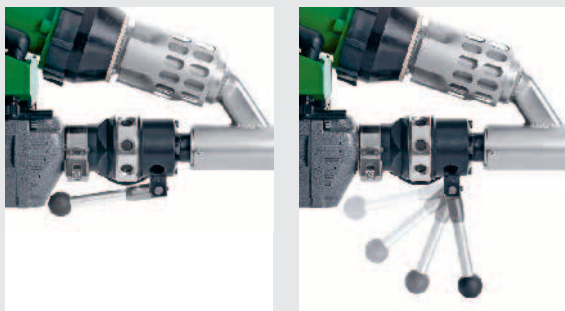
For more information visit our website

[www.bak-ag.com](http://www.bak-ag.com)

We develop individual tool types, especially suited for your application.



View front panel ExOn2-6.



Integrated tool stand for Exon1-3.



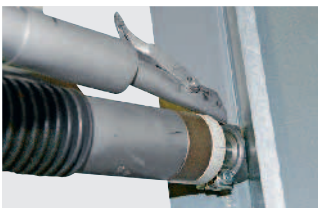
All the extruders are also available for external air supply on request.

Hand welding extruder

# MICRO

Small,  
light,  
unique

- for welding of PE, PP, PVDF and PVC
- separated air and mass temperature control
- patented temperature control direct in the mass
- internal air supply built-in in the control box
- brushless motor for drive and blower



Worldwide the smallest and lightest hand held extrusion welder. Extruder weight only 2,3 kg, Output up to 0,5 kg/h.

#### Technical Data

Voltage	V	230
Frequency	Hz	50/60
Power consumption	W	1300
Output with HDPE material	kg/h	0,1-0,5
Welding consumable	mm	3 and 4 round
Size Extruder (l x w x h)	mm	410 x 75 x 100
Size control box (l x w x h)	mm	530 x 210 x 410
Weight Extruder	kg	2,3
Weight control box	kg	20 with 5 m cord
Protection class I		⊕
Markings		CE

## Hand welding extruder

# EXON 1/2

ExOn 1\*\*\*



ExOn 2



ExOn1 A\*



ExOn 2A\*



Type		ExOn 1	ExOn 1A	ExOn 2	ExOn 2A
Voltage	V	230 or 120	230 or 120	230	230
Frequency	Hz	50/60	50/60	50/60	50/60
Power consumption	W	2640	2320	3600	3100
Output with HDPE material	kg/h	max. 1,2	max. 1,2	max. 2	max. 2
Welding consumable	mm	3 and 4 round	3 and 4 round	4 or 5** round	4 or 5** round
Size (l x w x h)	mm	500 x 100 x 340	500 x 100 x 340	560 x 120 x 350	560 x 120 x 350
Weight	kg	5	5	7	7
Pre-heater		brushless	brush	brushless	brush
Welding materials		PE, PP, PVDF, PVC	PE, PP	PE, PP, PVDF, PVC	PE, PP
Protection class I		⊕	⊕	⊕	⊕
Markings		CE	CE	CE	CE

\* Air heated hand welding extruder

\*\* indicate on order

\*\*\* The extruder is on request also available with digital read out of the air temperature.

## Hand welding extruder

# EXON 3/5/6

ExOn 3



ExOn 5



ExOn 3A \*



ExOn 6



Type		ExOn 3	ExOn 3A	ExOn 5	ExOn 6
Voltage	V	230	230	230 oder 400	230 oder 400
Frequency	Hz	50/60	50/60	50/60	50/60
Power consumption	W	3700	3600	5300	5300
Output with HDPE material	kg/h	max. 3	max. 3	max. 5	max. 6
Welding consumable	mm	4 or 5** round	4 or 5** round	5 round	pellets
Size (l x w x h)	mm	650 x 120 x 360	650 x 120 x 360	660 x 126 x 448	660 x 126 x 365/600
Weight	kg	8	8	11	12
Pre-heater		brushless	brush	brushless	brushless
Welding materials		PE, PP, PVDF, PVC	PE, PP	PE, PP	PE, PP
Protection class I		⊕	⊕	⊕	⊕
Markings		CE	CE	CE	CE

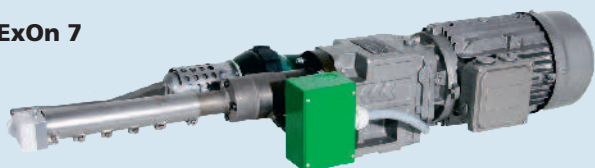
\* Air heated hand welding extruder

\*\* indicate on order

# EXON 7/8

# HS 28

ExOn 7



ExOn 8



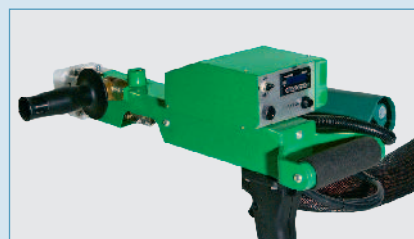
HS28



Control box  
type ExOn 7, ExOn 8



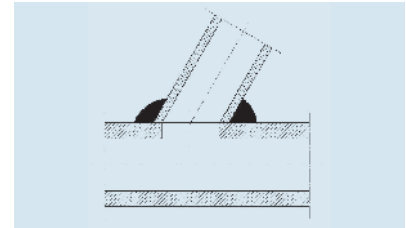
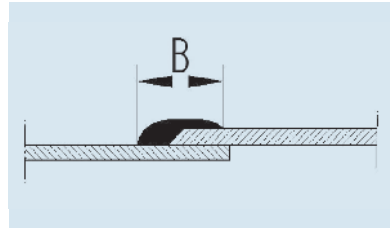
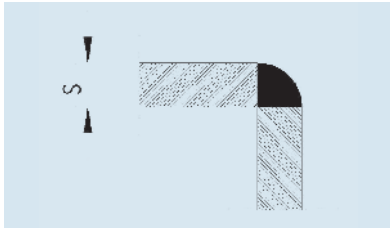
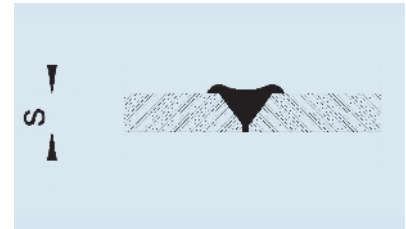
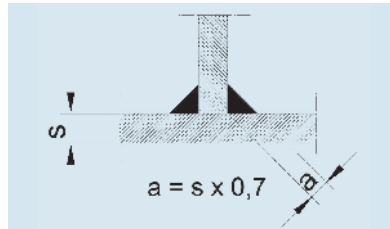
HS28  
welding head



Type		ExOn 7	ExOn 8	HS28
Voltage	V	3x400	3x400	3x400
Frequency	Hz	50/60	50/60	50/60
Power consumption	W	6000	6000	11 000
Output with HDPE material	kg/h	max. 5	max. 6	max. 12
Welding consumable	mm	5 round	pellets	pellets
Size (l x w x h)	mm	846 x 267 x 242	852 x 267 x 242/430	1040 x 600 x 660
Weight	kg	17	18	210
Pre-heater		brushless	brushless	brushless
Welding materials		PE, PP	PE, PP	PE, PP
Protection class I		⊕	⊕	⊕
Markings		CE	CE	CE

# ACCESSORIES

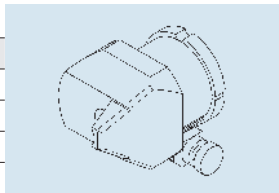
## Welding shoe calculation



## Hand welding extruder type Micro

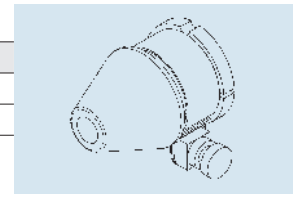
### Welding shoe fillet seam

Order no.	sheet thickness (s)
D-1175	3-4
D-1176	5-6
D-1177	8
D-1178	10



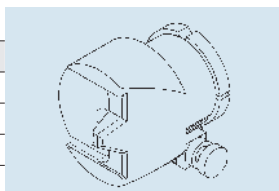
### Welding shoe round

Order no.	
D-1183	∅ 7
D-1184	∅ 9



### Welding shoe V-seam

Order no.	sheet thickness (s)
D-1179	3-4
D-1180	5-6
D-1181	8



### Airtube with tacking nozzle

Order no.
D-1185



# ACCESSORIES

## Hand welding extruder type ExOn 1-6

### Transport case metal

#### Order no.

D-0965	Type ExOn 1
D-1644	Type ExOn 2-3
D-1041	Type ExOn 5-6



### Revolving head

#### Order no.

DX321	Type ExOn 2
DX322	Type ExOn 2A
DX323	Type ExOn 3
DX325	Type ExOn 5-6



### Angle head 45°

#### Order no.

DX326	Type ExOn 2
DX327	Type ExOn 2A
DX328	Type ExOn 3
DX330	Type ExOn 5-6



### Angle head 90°

#### Order no.

DX331	Type ExOn 2
DX332	Type ExOn 2A
DX333	Type ExOn 3
DX335	Type ExOn 5-6

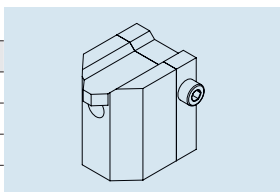


## Welding shoes type ExOn 1/1A

### Fillet seam

#### Order no. sheet thickness (s)

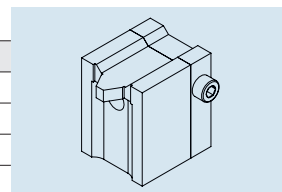
D-0827	5-6
D-0828	8
D-0829	10
D-0830	12



### V-seam

#### Order no. sheet thickness (s)

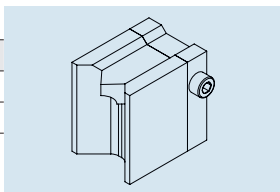
D-0831	5-6
D-0832	8
D-0833	10
D-0834	12



### Corner seam

#### Order no. sheet thickness (s)

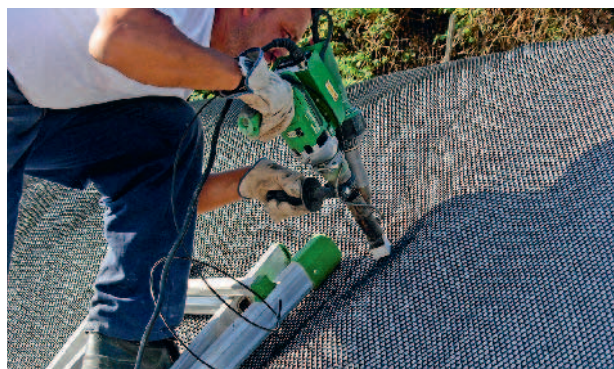
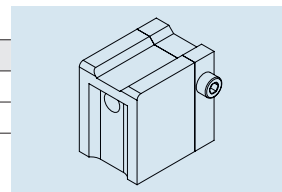
D-0837	5-8
D-0838	10-12



### Overlap seam

#### Order no. seam width

D-0835	20
D-0836	25



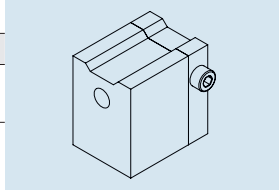


## Welding shoes type ExOn 1/1A

### Unshaped

#### Order no.

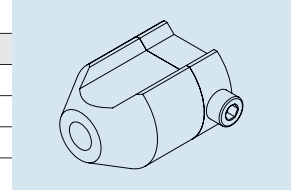
D-0842	30x40x30 mm Lxwxh
--------	----------------------



### Round

#### Order no.

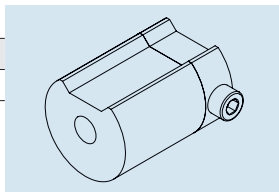
D-0839	∅ 15 mm
D-0840	∅ 20 mm
D-0841	∅ 25 mm



### Unshaped round

#### Order no.

D-0843	∅ 30 mm
--------	---------

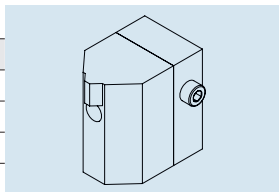


## Welding shoes type ExOn 2-6

### Fillet seam

#### Order no. sheet thickness (s)

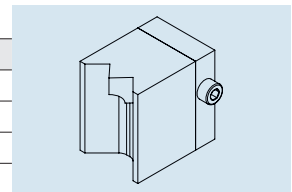
D-0174	5-8
D-0175	10-12
D-0177	15
D-0178	20
D-0179	25
D-0180	30
D-0181	35
D-0182	40



### Corner seam

#### Order no.

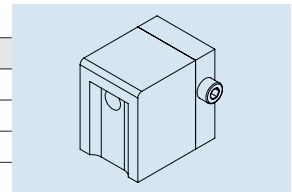
D-0195	5-8
D-0196	10
D-0197	15



### Overlap seam

#### Order no.

D-0192	25
D-0193	30
D-0194	35
D-0599	40

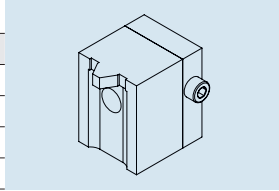


# ACCESSORIES

## Welding shoes ExOn 2-6

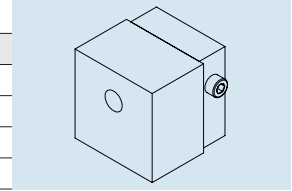
### V-seam

Order no.	
D-0906	5-6
D-0183	8
D-0184	10
D-0185	12
D-0186	15
D-0187	20
D-0188	25
D-0189	30
D-0190	35
D-0191	40



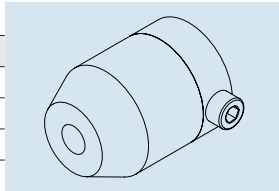
### Unshaped

Order no.	
D-0223	l x w 45 x 30 mm
D-0224	l x w 50 x 40 mm
D-0225	l x w 45 x 45 mm
D-1237	l x w 45 x 50 mm
D-0247	l x w 60 x 70 mm



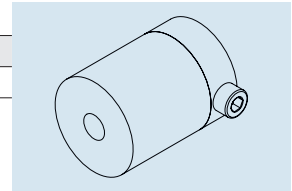
### Round

Order no.	
D-0600	∅ 15 mm
D-0366	∅ 20 mm
D-0337	∅ 25 mm



### Unshaped round

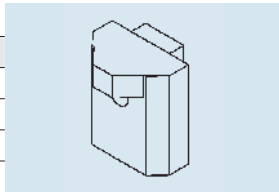
Order no.	
D-0598	∅ 35 mm



## Welding shoes hose extruder HS28

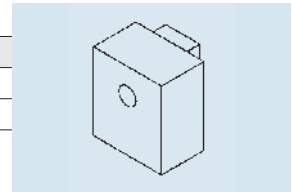
### Fillet seam

Order no.	sheet thickness (s)
D-1761	30
D-1762	35
D-1763	40



### Unshaped

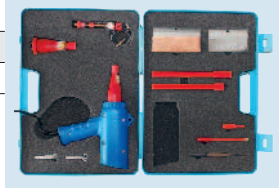
Order no.	Size
D-1760	l x w 70 x 60 mm
D-1543	l x w 90 x 80 mm



## Test equipment

### Spark tester

Order no.  
5200229



### De-reeler for welding rod (1 roll)

Order no.  
5118190



### Vacuum pump

Order no.  
DX150 230 V  
DX096 120 V



## Vacuum test bells

### Rectangular

Order no.  
DX121 740x280x160 mm



### Round

Order no.  
5200305 Ø 360 mm



### Inside edge

Order no.  
5200315



### Outside edge

Order no.  
5200330



### Inside corner down

Order no.  
5200310



### Outside corner down

Order no.  
5200320



### Inside corner up

Order no.  
5200325



### Outside corner up

Order no.  
5200335



# HeatOn-GROUP

— YOUR BEST CHOICE —

Consulting – Sales – Training – Service – Development

Beratung – Verkauf – Schulung – Service – Entwicklung

**BAK**  
www.bak-ag.com 

**DOHLE**  
www.dohle-extruder.de

**HERZ**  
www.herz-gmbh.com



**BAK Thermoplastic Welding Technology AG**

Industriestrasse 6, 6064 Kerns/Switzerland

Tel. ++41 (0)41 661 22 50, Fax ++41 (0)41 661 22 51  
e-mail info@bak-ag.com

**Dohle Extrusionstechnik GmbH**

Eitorfer Strasse 1, 53809 Ruppichteroth/Germany  
Tel. ++49 (0)2295 902960, Fax ++49 (0)2295 902961  
e-mail info@dohle-extruder.de

**Herz GmbH**

Biberweg 1, 56566 Neuwied/Germany  
Tel. ++49 (0)2622 810 86, Fax ++49 (0)2622 810 80  
e-mail info@herz-gmbh.com