

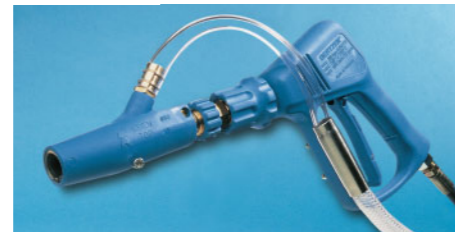
**Original OERTZEN accessories\* at work.  
Ensuring highest cleaning efficiency.**



Paint removal of obsolete signage on 200 m high chimney with water-sandblasting system TORNADO and high-pressure unit E 320 - even with 150 m height still 285 bar at the nozzle.



**TORNADO**  
Water-sandblasting system with long-life borocarbide nozzle complete with helmet, visor, ear muffers and protective glasses as well as a sand-container with sand suction hose. Accessory: waterproof overall



**MONSOON-VARIO**  
Water-sandblasting system for softblasting on e.g. monuments - pressure and abrasives adjustable at pistol, for minimizing surface damage.



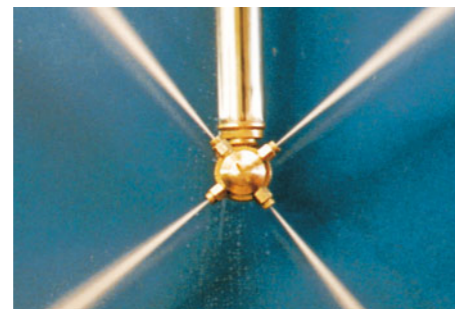
**TURBO-BLASTER**  
Combi-nozzle with rotating water jet insures substantial increase of impact and transportation properties of high-pressure water.



Draining of underground shaft with sludge pump - high-pressure water transports sludge away rapidly.



**SLUDGE PUMP**  
Pumps sludge and liquids from containers, tanks and pits.



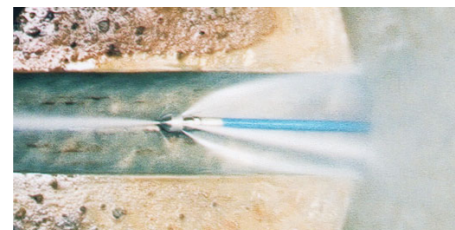
**TIR internal tank cleaner**  
Automatic cleaning of barrels, tanks and containers - various models available.



Spring loaded hose reels - for 20m DN8 in varnished carbon steel or V2A - for wall mounting, optional swivelling feature



**Floor cleaner BRW 470 INOX**  
Perfect cleanliness in less time for food and beverage industry, hotels and restaurants



3/8" drain cleaning hose with drain cleaning rocket to clean waste water drains from 150 - 300 mm diameter.



**DRAIN CLEANING SET**  
Rocket nozzle, rocket drill nozzle, rotating turbo rocket nozzle 1/4", 3/8"

Hose reels - for transporting, securing and storing long hoses - high quality swivel joints on all models

\*please ask for ORIGINAL ACCESSORIES leaflet.

**OERTZEN sweepers, scrubbers, wet & dry vacuums for floors of any size and any kind - indoor and outdoor.**



Quick, handy and solid - indoor and outdoor - with electric or gasoline engine drive - OERTZEN provides in any case the suitable sweeper.

Machines in three capacity ranges for clean, profitable work, even in

Model	Power	Drive	Working width mm	Waste tank liters	Filter cleaning	Capacity m <sup>2</sup> /h	Weight kg
<b>Walk-behind sweepers</b>							
8000 E	electric	+	850	50	mech.	3.400	85
8000 H	gasoline	+	850	50	mech.	3.400	87
<b>Ride-on sweepers</b>							
9500 E Comfort	electric	+	1.200	55	electric	6.000	286
9500 H Comfort	gasoline	+	1.200	55	electric	6.000	305
14000 Duo	g/e/d	+	1.400	130	electric	10.000	540

gradient, narrow areas or corners.

Working outdoor on wet surface? Just operate the sweeper and shut down the vacuum. Or do you want a machine with two independent engines? Take a look at model 14000 Duo.

Easy handling, functional equipment and trouble free maintenance - these advantages are the main features of all sweepers of the OERTZEN product range.



Compact, fast, easy manoeuvrable - the OERTZEN scrubbers. Professional wet-cleaning of PVC, linoleum

Model	Power	Drive	Working width mm	Suction width mm	Water tank liters	Waste tank liters	Capacity m <sup>2</sup> /h	Weight kg
<b>Walk-behind scrubbers with mains connection</b>								
EL 350	230V	-	350	420	12	13	700	29
<b>Walk-behind scrubbers with battery drive</b>								
BA 650	24V	+	600	815	70	75	2.700	94

and the like, artificial and natural stone as well as tiles create no problem for these machines. Thorough and preservative cleaning becomes profitable due to high working capacity - guaranteed by a working width of 35 - 60 cm. Rolls, brushes and absorption

are being effected by strong, robust battery and AC-drive (EL 350).

Moreover the BA 650 model is equipped with adjustable drive.



OERTZEN S power vacs for wet and dry applications are robust allround workers. High suction abilities and large waste tanks allow economic cleaning in less time.

Sturdy plastic vessels and chassis,

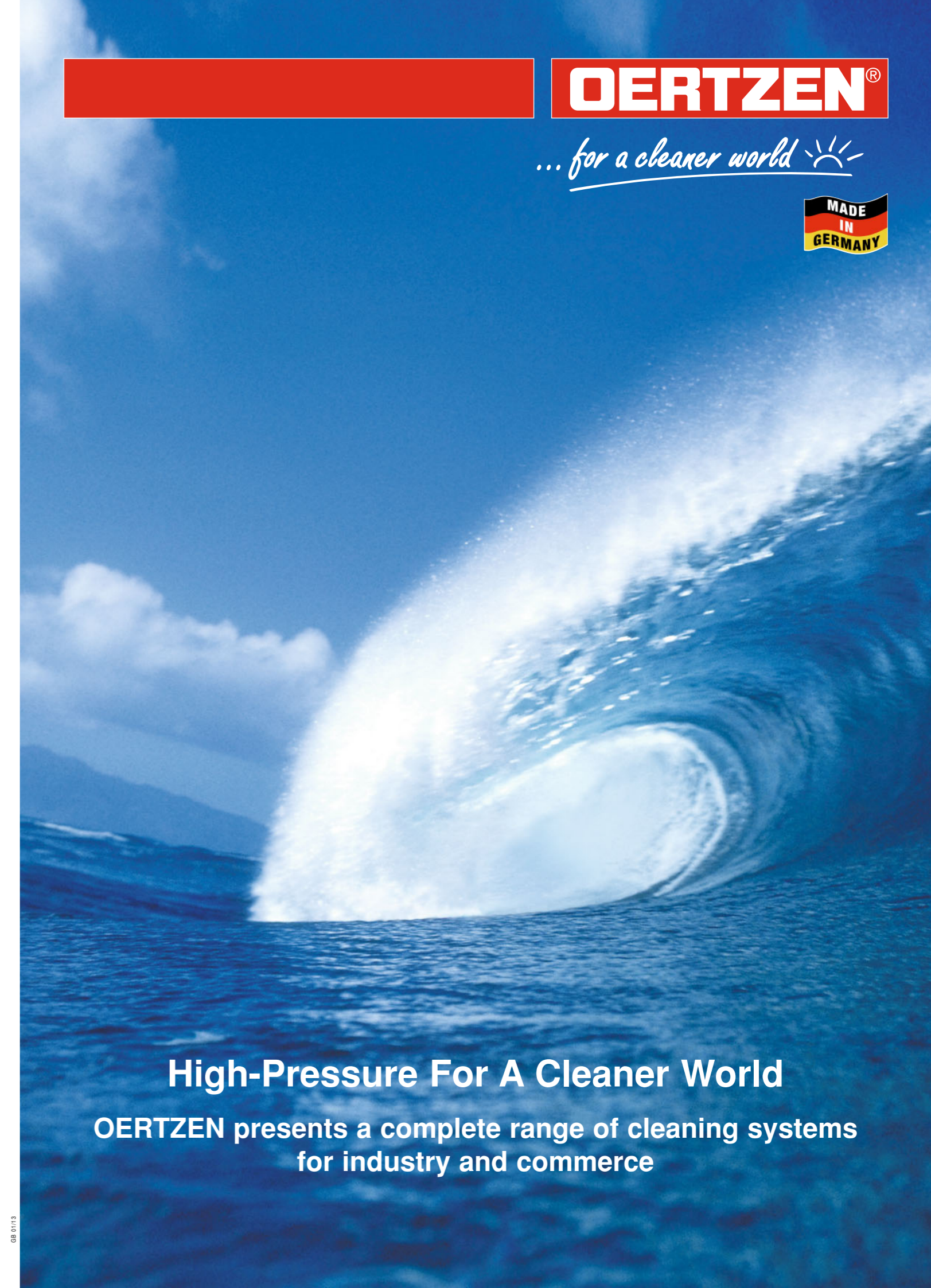
Model	Waste tank liters	No. of turbines	Suction power W	Suction pressure mbar	Emission dB (A)	Weight kg
<b>Wet and dry vacs</b>						
NT 43	43	1	1.080	230	61	16
NT 90-2	90	2	2.160	230	62	27
NT 90-3	90	3	3.240	230	63	29
WPS 90 (with pump)	90	2	3.300	230	62	33
<b>Spray extraction vac</b>						
APS 30	30	1	1.080	230	61	11

micro filters and rich accessories complete the serial equipment.

All wet and dry vacs come with a level switch to shutdown the machine in order to prevent water from penetrating the turbines.

Filters can be re-used, versatile accessories cover all possible applications. As an option OERTZEN vacs are also available as three phase models.

OERTZEN appointed dealer:



**OERTZEN®**

... for a cleaner world ☀



**High-Pressure For A Cleaner World**

**OERTZEN presents a complete range of cleaning systems for industry and commerce**

The full OERTZEN product range.  
Cleaning systems for your industry. For your requirements.

OERTZEN - more than 60 years  
Power • Quality • Service

www.oertzen-gmbh.de

Drive/motor/engine	Electric motor, cold water	Electric motor, hot water	Gasoline/diesel engine, cold water	Heater module	Gasoline/diesel engine, hot water	Our recommendation for your industry
<p>4 kW</p>	<p>305 CX    312 Profi    314 Profi</p>	<p>Compact 120 K</p>	<p>318 Mobil HB    318 Mobil D</p>	<p>HOT BOX 200</p>	<p>HOT BOX 200</p>	
<p>10 kW</p>	<p>322 KL    JuniorPower</p>	<p>EuroPower 2    SuperMagnum 220</p>	<p>318 Mobil HB    318 Mobil D</p>	<p>HOT BOX 200</p>	<p>HOT BOX 200</p>	
<p>14 kW</p>	<p>E 240 / E 320    E 1700</p>	<p>SuperMagnum 270    S 960 H</p>	<p>Mobil 240    Mobil 320</p>	<p>HOT BOX 200 / 500</p>	<p>Mobil 250-HB / HD</p>	
<p>20 kW</p>	<p>E 500-17    S 334 VA / S 350 VA</p>	<p>S 1320 H</p>	<p>Mobil 400 / 500</p>	<p>HOT BOX 500</p>	<p>POWERTRAILER 330</p>	
<p>45 kW</p>	<p>E 500-30    E 1000</p>	<p>E 1800 / E 2500</p>	<p>D 500-30    D 1000</p>	<p>HOT BOX 500</p>	<p>POWERTRAILER 380 / 500</p>	



OERTZEN technology cleans sandstone facades of Hamburg central railway station

Numerous requirements for cleaning and surface treatment from most varying industries require a wide range of high-pressure cleaning systems:

- Pumps with or without heater
  - Electric or combustion engine drive
  - Fixed or mobile installations
  - Versatile accessories that increase productivity.
- OERTZEN offers a solid range of sturdy machines and accessories at ultimate quality.
- There are good reasons for large globally operating companies being our customers for decades.
- The main objectives of our developments are not only using best materials such as ceramic, INOX or borocarbide our real targets are to sincerely serve our customers:
- Surpassing cleaning capabilities
  - Durability, even for 24 hours daily

A domestic sales organisation of 10 branches in Germany as well as specialized importers in many countries worldwide ensure competent advice when difficult cleaning problems have to be solved. A comprehensive network of service centres guarantees reliable service support.

More than 60 years of experience in cleaning technology will guarantee peace of mind in your choice of OERTZEN equipment.



You can rely on OERTZEN.

Model	Max. water consumption l/h	Unloading pressure bar	Operating pressure bar	Water temperature °C	Pump speed 1/min	Standard voltage	Drive	Electric consumption kW	Drive-power kW	Thermovalue	Weight kg
<b>Cold water high-pressure cleaners</b>											
305 CX	600	160	150	-	2.800	230V/1-50 Hz	electric	3,0	-	-	24
322 KL	960	210	190	-	1.420	400V/3-50 Hz	electric	5,1	-	-	61
318 Mobil HB	960	270	250	-	3.400	-	gasoline	-	9,6	+	64
318 Mobil D	960	230	210	-	3.400	-	diesel	-	7,5	+	115
<b>Hot water high-pressure cleaners</b>											
Compact 120 K	540	140	120	90	2.800	230V/1-50 Hz	electric	2,4	-	-	75
JuniorPower	800	180	160	140	2.800	400V/3-50 Hz	electric	5,5	-	-	88
EuroPower 2	900	195	180	140	1.420	400V/3-50 Hz	electric	6,6	-	-	142
<b>Cold water high-pressure cleaners (electric and combustion engine drive)</b>											
312 Profi	620	190	170	-	1.420	230V/1-50 Hz	electric	3,5	-	opt.	38
314 Profi	760	160	140	-	1.420	230V/1-50 Hz	electric	3,5	-	opt.	38
Z 240	1.380	230	210	-	540	-	P.T.O.-DRIVE	-	-	+	27
E 200-16	1.000	250	230	-	1.420	400V/3-50 Hz	electric	6,0	-	+	77
E 200-23	1.380	180	160	-	1.420	400V/3-50 Hz	electric	6,5	-	+	77
E 240	1.380	250	230	-	1.420	400V/3-50 Hz	electric	8,9	-	+	96
E 320	1.320	330	310	-	1.420	400V/3-50 Hz	electric	12,5	-	+	112
E 334	2.000	230	210	-	1.420	400V/3-50 Hz	electric	12,5	-	+	146
E 400	1.320	405	385	-	1.420	400V/3-50 Hz	electric	16,6	-	+	153
E 500-17	1.020	520	500	-	1.450	400V/3-50 Hz	electric	15,0	-	+	159
E 500-30	1.800	520	500	-	1.450	400V/3-50 Hz	electric	22,0	-	+	260
E 1000	1.090	1.050	1.000	-	980	400V/3-50 Hz	electric	30,0	-	+	460
E 1700	156	1.800	1.700	-	1.420	400V/3-50 Hz	electric	8,9	-	-	148
E 1800	840	-	1.800	-	1.500	400V/3-50 Hz	electric	45,0	-	-	750
E 2500	480	-	2.500	-	1.500	400V/3-50 Hz	electric	45,0	-	-	750
Mobil 240	1.320	260	240	-	1.420	-	gasoline	-	10,3	+	96
Mobil 320	1.380	335	315	-	1.420	-	gasoline	-	16,2	+	151
Mobil 400	1.320	405	385	-	1.420	-	gasoline	-	16,2	+	153
Mobil 500	1.020	520	500	-	1.420	-	gasoline	-	16,2	+	157
D 500-30	1.800	520	500	-	1.450	-	diesel	-	33,0	+	408
D 1000	1.090	1.050	1.000	-	1.450	-	turbo-diesel	-	45,0	-	570
<b>Cold and hot water fixed installations</b>											
S 314	760	140	120	-	1.420	400V/3-50 Hz	electric	2,2	-	+	45
S 323 VA	1.380	140	120	-	1.420	400V/3-50 Hz	electric	5,5	-	+	95
S 334 VA	1.900	140	120	-	1.420	400V/3-50 Hz	electric	7,5	-	+	128
S 350 VA	3.000	140	120	-	1.420	400V/3-50 Hz	electric	11,0	-	+	146
S 960 H	960	190	160	140	1.420	400V/3-50 Hz	electric	5,3	-	+	181
S 1320 H	1.320	190	160	140	1.420	400V/3-50 Hz	electric	7,2	-	+	201
<b>Hot water high-pressure cleaners (electric and combustion engine drive)</b>											
Mobil 250-HB/HD	1.440	270	250	120	1.450	-	gasoline/diesel	-	13,2/11,7	+	330/360
SuperMagnum 220 ELC	960	230	210	140	1.420	400V/3-50 Hz	electric	6,9	-	-	145
SuperMagnum 270 ELC	1.320	230	210	140	1.420	400V/3-50 Hz	electric	8,8	-	-	210
<b>Hot water high-pressure cleaning trailers</b>											
POWERTRAILER 330	1.320	350	330	120	1.420	-	diesel	-	18,0	+	790
POWERTRAILER 380	1.300	400	380	120	1.420	-	diesel	-	21,0	+	1.090
POWERTRAILER 500	1.800	520	500	120	1.450	-	diesel	-	33,0	+	1.180
<b>Heater module for cold water high-pressure cleaners</b>											
HOT BOX 200	540 - 1.380	270	250	130	-	230V/1-50 Hz	electric	-	-	-	79
HOT BOX 500	540 - 1.380	520	500	130	-	230V/1-50 Hz	electric	-	-	-	109

- Single phase 230 V
- Three phase 400 V
- Building industry  
Building artisans  
Concrete and monument restorations
- Transport industry  
Rail road
- Municipalities  
Hospitals  
Public swimming pools
- Industrial cleaning contractors  
Building cleaning contractors  
Facade cleaning contractors
- Airlines  
Airport services
- Vehicle repair shops  
Plumbers  
Gas stations
- Food industry  
Chemical industry  
Machine industry
- Painting industry  
Facade cleaning industry
- Shipyards  
Harbours
- Agriculture  
Lifstock  
Zoos

Technical data are subject to alterations without notice.  
- not available  
opt. optional  
+ standard equipment